

The Portico

Dr. Martin Luther Church

325 S. Main Street

Oconomowoc, WI 53066

PHONE: (262) 567-3829

FAX: (262) 567-6033

Email: dmlc@globaldialog.com

Church Web Site: drmartinlutherchurch.org

Cluster Web site: lakecountrycluster.org

August, 2011

Senior Pastor

Larry Harpster (262) 567-3829

Pastoral Assistant

Larry Henning (262) 716-6179

Parish Nurse

Sue Konkel (262) 569-0505

Director of Music

Heidi K. Graf (414) 380-1886

Administrative Secretary

Mary Engel

Volunteer Coordinator

Bobbie Dierbeck

Summer Office Hours

Mary will be in the church office Monday through Thursday from 7:00 AM to 2:00 PM.

The church office will be closed on Fridays.

Worship Schedule

Saturday 5:00 PM Chapel Service

traditional format

Sundays 9:00 AM Worship

Includes a variety of musical styles, a blend of hymns and contemporary songs so that there is something for everyone at each service.

Sundays 10:30 AM Praise Service

“Roll the Stone,” our Praise Band continues to perform. Join us at this upbeat and energetic service.

From the Pastor

A Lover and A Historian

Dear Members of DMLC,

I want to share with you how excited I am to finally be here in Oconomowoc as your Pastor. When I get up in the morning I can't wait to get to the church. I recently attended a workshop sponsored by the Alban Institute about how to start well in your new congregation. It said that every pastor when they arrive new should be a "lover and a historian". I think that phrase needs some clarification.

One of my main goals over the next few months is to get to know you and to find something out about you that I love. Being the church of Jesus Christ is about relationships, relationship to God and to one another. Without getting to know you I will not be able to be a very good pastor. Please feel free to invite me out for coffee and a visit. I want to hear about your life, your passions and your gifts.

My other goal is to become a historian of Dr. Martin Luther church. I know that the church organized in 1896 and it has had a rich history. This community feels like a terrific place and I am sure that it has great potential for ministry in Jesus name. I want to get to know that history and all the ups and downs, challenges and joys of the congregation.

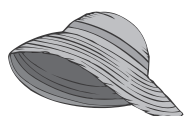
Over the next couple of months I plan on hosting some visiting sessions so I can get to know you and this community. May God bless our new relationship!!!

Pastor Larry Harpster

"I wish I may, I wish I might. Have the wish I wish tonight."

Each month there will be a different \$5.00 or less item for people of the congregation to put in the Wishing well, which is located in the narthex. Items will be given to the Lake Area Free Clinic and/ or the Oconomowoc food pantry, as well as Pastor and Sue Konkel to distribute as they see the need, depending what the item is.

During the month of August we will be collecting eye protection: Sunglasses, caps or hats. (New or gently used)



If anyone knows of a need that would be good for a certain month, please contact Natalie Everts, 920.262.2050 .



Clothing and Household Items Drive

The Outreach Ministry of the month for August is a clothing-household items drive. We are giving the donations to Lake Country Caring and The Hope Center. You can drop off your donated items all month long in the Fellowship Hall behind the left side of the stage curtain. It will be marked "Clothing drive drop off". We are looking for gently used male and female clothing of any age, season or size including clothing for professional dress, shoes, boots, and coats. They are especially asking for men's clothing. We will take towels, linens; kitchen items such as dishes, pots, pans and silverware; working lamps, small appliances and clocks; children's toys and books; crib sheets and blankets, baby bottles, infant size diapers, hooded towels, baby wipes, lotions and washes. If you have any larger items, such as working appliances that are not built in, bedroom, living room, and dining room furniture you would like to donate please drop them off Mon. - Sat., 9am-noon, at Lake Country Caring located at 603 Progress Dr., Hartland. Scheduled pick-up is available if necessary @262.367-6670. If you have any questions please contact Natalie Everts at 920.262.2050. Thanks and let's make a difference in our community!



Vacation Bible School 2011

Monday - Thursday

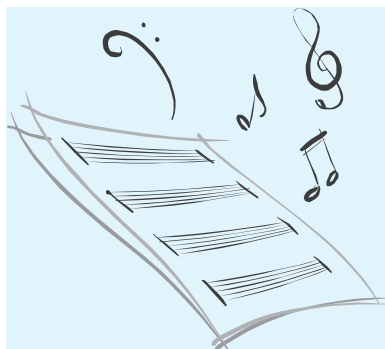
August 1st - 4th

9:00am - 12:00pm



Children Travel Back in Time!

Imagine the chance to go back in time to the Home Town of our Savior. To walk through the market place where Jesus walked. With the scent of frankincense and myrrh in the air you try your hand at carpentry or wool felting. And the best part...you are blessed to sit with Mary and listen to all the tales only the Mother of Jesus could know. The stories of Jesus growing up - just like you and me!



Music Notes

Congratulations!

DMLC has made a new beginning! We have moved forward through our transition year and now we welcome our new lead pastor, Larry Harpster!

I am looking forward to working with Pastor Harpster and continuing to build our various ministries at DMLC. It is my fervent prayer that all of us, together, continue to grow as a “beacon of light” for our community, reaching out to people around us in need of the hope and reassurance that Jesus gives us. May God bless continue to bless our efforts!

Once again I am preparing for the beginning of our program year. We will be starting a couple weeks early as we need to prepare for the installation of Pastor Harpster. This will take place on Sunday, September 25. Please watch for further information on this very special event in the life of our community!

God’s blessings to you as you continue to enjoy your summer, vacations and families!

Heidi K. Graf

Director of Music

Young(er) Women’s Fellowship Gatherings

August 7, September 11, October 2, November 6 and December 4, 2011

4:30—6:00PM in the Education Wing

Come when you can, leave when you must, childcare will be provided if requested

A gathering for young(er) women (define that as you choose) to gather for conversation, mutual support and a glass of wine. Meet to talk, listen, pray, laugh, relax, and enjoy time together to reflect on lives as women and children of God. Feel free to bring a favorite snack, dessert or bottle of wine. This group recognizes the crazy schedules many women keep, so come when schedules permit, enjoy the time set apart.

Dear Friends,

I find myself needing to ask you for a favor in partnership with Heidi and the Worship and Music Ministry team. Over the last couple of weeks all of the wireless microphone used by the Pastors and others have been damaged and are no longer operational. If you attended this past weekend’s worship service you saw the Pastor’s use either the pulpit or a hand held microphone. As you may know, we have been taking the stance that all non-critical purchases need to be funded prior to purchasing in an effort to be financially responsible.

It would be great if we could get the Pastor’s outfitted with wireless mic’s once again and as such enable them to speak from the floor of the sanctuary. We need approximately \$500 to complete this. If you feel this is worthwhile we would appreciate your donation to the “**MIC the Ministers**” fund.

Donations can be made to the Church Office or placed in the offering plate. Should there be any funds in excess of \$500 we will hold in trust for the next worthy need.

Thanks for your consideration,

Andy King

Council President

Men's Bible Study

You are invited to participate in a great casual learning and fellowship experience that takes place on the **SECOND Saturday of every month** at the Pabst Farms YMCA from 7:30 - 8:30 am. You do not need to be a member of the YMCA to participate. Please contact Chris Butschke (262.966.0270) or Mike Driscoll (262.646.5605) for directions/additional details.

Scrapbooking

Please note that the scrapbooking group will not be meeting in August. We will resume meeting the second Saturday in September from 9:00am—4:00pm. See you then!!!!

Quilting

The quilting group will meet on Wednesday, August 17th at 9:00 a.m. to make quilts for Lutheran World Relief. You do not need to know how to sew to help.

From Our Parish Nurse, Sue Konkel

No Energy Drinks Greatly Limit use of Sports Drinks *Know the Difference*

When I worked with the confirmation youth a few years ago, we had the “energy” drink discussion. I was surprised how many thought “energy drinks” were great and were very familiar with them! There are a number of these products being widely marketed to our children and adolescents for inappropriate uses.

When it comes to hydrating kids, there certainly is an array of sodas, juices, iced tea and bottled waters, sports, and energy drinks to choose from. **Unless you are reading labels, and know the differences between these products, it can be confusing.**

What they all have in common is added ingredients that say they “do” something extra, whether its increase energy and alertness, boost nutrition, or even enhance athletic performance. **But are they good options for kids?**

Energy drinks: (often suggest enhanced concentration and mental alertness) contain stimulants including caffeine, guarana, ginseng, and or taurine, with varying amounts of carbohydrates, vitamins, proteins and amino acids. *(Some of these energy drinks can have more than 500mg of caffeine, which is equivalent of 14 cans of soda)* **Energy drinks are never appropriate for children or teenagers. They can result in kids taking in potentially large amounts of caffeine or other stimulant substances leading to increased heart rate and blood pressure as well as sleep disturbances and anxiety.**

Sports drinks: (often suggest optimization of athletic performance, as well as replacement of fluid and electrolytes lost from exercise) often contain carbohydrates, vitamins and electrolytes such as sodium, potassium, calcium and magnesium. Confusion about these drinks and the differences can lead to unintentional drinking of **energy drinks** when their goal is simply to rehydrate and replenish carbohydrates, electrolytes, and water with **sports drinks**. Sports drinks may be beneficial for kids who participate in prolonged rigorous physical activity lasting longer than an hour (such as long-distance running and biking, or high-intensity exercise such as soccer, basketball, or hockey). However, sports drinks are not necessary for the casual athlete and should not be consumed on a regular basis. Ask your pediatrician if you are not sure if these sports drinks are necessary for your child.

Vitamin Water: also know as fitness waters or enhanced waters, come in many flavors and contain various combinations of supplemental vitamins and minerals. They also often contain extra calories, artificial sweeteners, caffeine, or herbal ingredients **whose effects have not been studied in children** (such as ginseng or St. John’s wort). They can provide too much of a good thing, **getting more than the recommended daily allowance of some vitamins and minerals can be harmful to a child’s health. The daily allowances listed on the label are recommendations for adults, not kids.**

Soda: is not recommended for hydration during sports and should be avoided because it contains excess sugar, which can lead to weight gain. What’s more, the carbonation can cause an upset stomach. Soda also often contains caffeine.

Evaluating the Choices:

Since everyone needs to stay hydrated to stay healthy, you can’t go wrong giving kids plain water. But what about kids who play sports; do they need something extra to avoid dehydration?

Not necessarily. The average young athlete can and should get all the necessary nutrients and hydration by eating healthy foods and drinking plenty of water before, during, and after exercise. During games and competitive events, drinks should be available at all times and regular water breaks should be scheduled about every 15-20 minutes. The amount of water needed can vary depending on the child’s age, weight, intensity of the activity, and the weather conditions.

In general:

A report by the American Academy of Pediatrics says that young athletes who participate in vigorous exercise or who are involved in exercise for a prolonged period of time can benefit from the use of sports drinks, but everyone else should obtain the vitamins and minerals through a well-balanced diet. For most children engaging in routine physical activity, plain water is best.

“Sports drinks contain extra calories that children don’t need, and could contribute to obesity and tooth decay. It’s better for children to drink water during and after exercise, and to have the recommended intake of juice and low-fat mild with meals. Sports drinks are not recommended as beverages to have with meals.”

–Dr. Holly Benjamin, AAP Council on Sports Medicine and Fitness.

As we embrace a deep sense of gratitude for recognizing our bodies as the miraculous vessels they are, let us cherish them with the choices we make for their care; they are, after all, our vehicles for carrying our Christ light into the world. Blessings on your summer, Sue

Child sponsored through Compassion, International

Outreach has sponsored Silenat Temesgen, age 8 yrs from Ethiopia. You are invited to write Silenat, forms and information are on the kiosk. All correspondence should be sent to: Child Correspondence Dept., Compassion International, Colorado Springs, CO 80997-0001

Thank You

St. Ben's

We thank the following people for donating, making and deboning the turkeys and serving the meal: Gordon Fleury, Dorothy Westgard, Roland and Arlene Krickhahn, Jim and Arlene Johnson, Kountz Family, Betty Peters, Cheri Conners, Jeanne Johns, Diane Gaido, Art Boettcher, Don and Phyllis Scharfenberg, Pat Siebrecht, Charlotte McMahon, Milene Wegner, Leslie Boettcher, Barb Lee, Joyce Bahr, Lee Gallert, Dick Zautner and Glenn Shong.

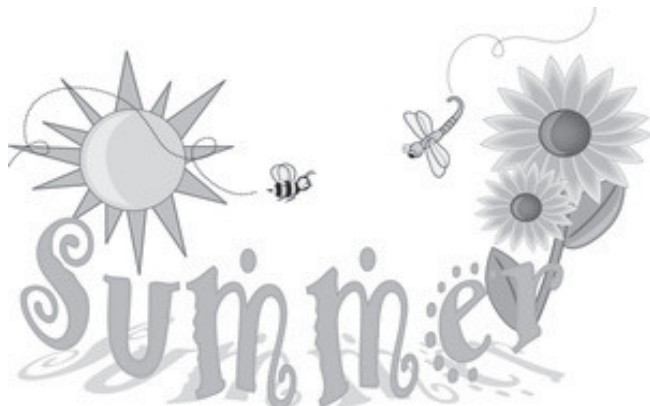
The next time we serve the meal is on Wednesday, August 3.

Bulletins and Newsletter

Thank you to Betty Till, Joan Keating, Pegi Drays, Charlotte McMahon, Esther Neumann, Kathleen Kimball, Milene Wegner and Kathy Vogt for assembling the bulletins and newsletter this month.

Summer Office Hours

Mary will be in the church office Monday through Thursday from 7AM—2PM. The church office will be closed on Fridays.



Healing Services will be held

August 13 and 14

along with Blood Pressure Screening

Next FREE Community Meal

Will be held on Monday, August 29th serving from 5:00—6:00 p.m. at First Congregational United Church of Christ, 815 S. Concord Road, Oconomowoc

Grass Mowing Schedule

AUGUST 4-6..... Gavin Zastrow
 AUGUST 11-13..... Gavin Zastrow
 AUGUST 18-20..... Julie and Andy King
 AUGUST 25-27..... Dave Graupman
 SEPTEMBER 1-3.....Gordon Fleury
 SEPTEMBER 8-10.....Dave Graupman
 SEPTEMBER 15-17.....
 SEPTEMBER 22-24..... Bill Post
 SEPTEMBER 29-OCT 1...
 OCTOBER 6-8.....Todd Rosch
 OCTOBER 13-15..... Bill Post

We have a few dates still open. If you would like to sign up please call the church office (567-3829). Thanks.



Stewardship Report June, 2011

Monthly	Actual	Budget
Income	\$19,219.91	\$29,914.75
Expense	\$30,708.70	\$29,914.75
Monthly Income—Expense	(\$11,488.79)	
Year to Date	Actual	Budget
Income	\$142,812.59	\$179,488.50
Expense	\$171,254.98	\$179,488.50
Year to Date Income—Expense	(\$28,442.39)	

Portico News Deadline

The deadline for the September issue of *The Portico* is Monday, August 15. All information for the month of September must be submitted by this date. Thank you.

Installation of Pastor Larry Harpster

Please mark your calendars for Sunday, September 25th. This will be the day when Pastor Larry Harpster is installed as our Senior Pastor. Join us for the worship service at 9:00 a.m. followed by a meal in Fellowship Hall.

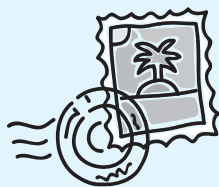
GFWC/OJWC Kid's Closet Consignment Sale coming in September

The Kid's Closet Consignment Sale will be held on Friday, September 16 from 9AM–6PM and on Saturday, September 17 from 8AM–1PM in fellowship hall.

Save A Stamp

Save Paper

Save Dollars



Help DMLC be better stewards of our resources, saving postage, printing and paper by signing up to receive our monthly newsletter via email or by pledging to read it through our webpage. Please fill out the form below and return it to the church office. Your quick response is requested.

MONTHLY NEWSLETTER

(please check one way below that you would like to receive *The Portico*)

I would like to continue receiving the monthly newsletter via the postal service

I would like to receive the monthly newsletter via email

I will read the monthly newsletter on the DMLC webpage: drmartinlutherchurch.org

Name: _____

Address: _____

Email Address (please print clearly):

Make a Donation, Ride a Bike, Support Outreach for Hope

There is something for everyone at the Family Biking Event, on Saturday, September 10, to support the churches of the Greater Milwaukee Synod, doing ministry among the poor in our Synod.

- For the casual rider, including families and children, a ride on the paved Glacial Drumlin Trail, 14 miles, or less if you prefer.
- For the more avid bicyclist, a 30 and 40 mile mapped and cued ride on country roads around Dousman.
- For everyone, a catered picnic at noon, with games, and Outreach for Hope ministries highlighted.
- For anyone who wants to support Outreach for Hope, the chance to **donate and have your gift doubled by a generous challenge grant from Jule and Mike Groh.**

REGISTRATION and MORE INFO: Go on line at www.outreachforhope.org and find the link for the 'Family Bike Ride.' Trail passes will be provided for those who don't already have one. Ride begins and ends in Dousman, WI, which is 6 miles south of Oconomowoc. There is no minimum for pledges, but participants are encouraged to get pledges and donations for Outreach for Hope. T-shirts will also be available at the Registration web site.

CONTACT: For questions call Nic Bur at 262-650-9697.

MAKE A DONATION: For those who simply want to support Outreach for Hope, you may also go on line at the Family Bike Ride link at www.outreachforhope.org or send your gift to the Synod office. Your donation will also be matched by a challenge grant.

MORE ABOUT Outreach for Hope: Outreach for Hope raises funds for congregations in the Greater Milwaukee Synod which serve central city neighborhoods and have made a commitment to remain a strong source of spiritual and community support.

There are 22 ministries being supported by OFH, with \$335,000 needed this year from individuals and special gifts. Please learn more about how you can be a donor to this vital work of the church. Go to the OFH Web Site, or contact the Director, Rev. Jim Bickel, at 414-671-1212.



25th Annual
LUTHERDALE FEST

QUILT AUCTION

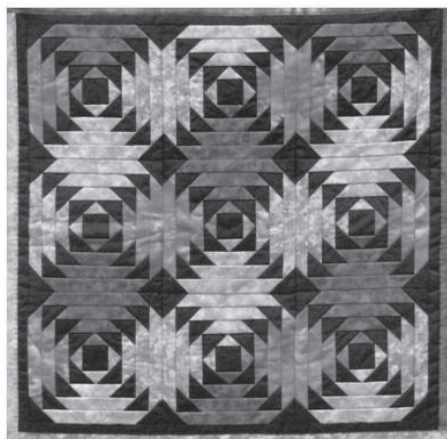
OVER
200
QUILTS

RAIN
OR
SHINE

A Fun Day for the Whole Family

*** LIVE QUILT AUCTION STARTING AT NOON ***

Bidder registration and quilt viewing start 9 a.m.



Saturday
August 13th, 2011
9 A.M. - 4 P.M.

Free Admission φ Free Parking
 Bakery and Homemade pies tent φ Climbing tower
 Crafts and mums tent φ Child care during auction
 Quilters' odds 'n ends tent φ Door prizes every hour
 Pontoon rides on the lake φ Swimming at the waterfront
 Silent auction theme baskets φ Food concessions and sweet corn

PREVIEW OF QUILTS
Friday August 12, 2011
 12:00 p.m.—8 p.m.

- Leisure Browsing
- All tents open for sales
- Light Lunch Available
- Silent auction bidding

*No quilt sales on Friday,
 Only Silent Bids on them*

PREVIEW THE QUILTS

on the Web at
www.lutherdale.org

or

at Lutherdale Bible Camp
 N7891 U.S. Hwy 12
 Elkhorn, WI 53121
 262.742.2352

Funds Supplemented by Chapters of Thrivent Financial for Lutherans